

XP

.

XP

XP

.

XP -

XP -

XP -

XP -

Activation Windows Product -

XP -

XP -

WIN9x XP -

XP -

XP -

/ -

XP -

XP -

XP -

XP -

XP -

XP -

XP -

XP -

My Documents Explorer Windows -

XP -

XP -

XP -

Windows -

XP -

XP

XP

XP

XP

(Status Bar)

winzip

Zip

ZIP

XP

pic1,pic2,pic3....picn :

XP

XP

config.sys

autoexec.bat

XP

XP

XP

Domain

XP

XP

Backup

XP

		XP	-
user account restrictions	Logon failure :		-
		XP	-
		?XP	-
			-
			-
/			-
			-
			Windows
	()	XP
XP			-
			XP
		XP	-
			DSL
		XP	NetMeeting
			XP
			-
	Upgrade		XP
			-
	Upgrade		XP
			XP
		XP	UNINSTALL
		XP	-
?XP		(DRIVERS)	-
			-
			XP
			-
			Windows XP Multilanguage Pack
			-
			Multilanguage Pack Windows XP
	XP	winnt32.exe	-
%			XP
			-

					-
IP	/x	WINIPCFG.EXE		XP	-
		Windows Messenger		XP	-
			XP	Messenger MSN	-
		Administrator		XP	-
					-
			?XP		-
		()	XP	-
					-
		Windows Media Player			-
		Windows Installer			-
			XP		-
					-
					-
	?	XP			-
"Access denied "			Home Edition		-
					-
		XP			-
			XP		-
	XP				-
	XP				-
				CDRom	-
				XP	-
				XP	-
				error STOP	-
		()		-
					-
XP					-
			(Restore System)		-

			boot.ini	-
	XP			-
			XP	-
	(Administrator		-
)	XP	-
	XP			-
		XP		-
			XP	-
XP			XP	-
	NTFS		XP	-
			XP	-
		XP		-
				-
				-
			?	-
	Windows Media Player			-
	mp3		wma	.
	?(Bootable)	XP		.
				.
	Restore Points			.
			XP	.
		XP		.
	Recovery Console			.

	Recovery Console			.
	Recovery Console			.
			XP	.
				.
Standby				.
	Windows XP Home Edition	Administrator		.
			Windows XP Home Edition	.
		Administrator		.
		Administrator		.
			Administrator	.
				.
			Checker (sfc System File)	.
	?Chkdsk			.
				.
		FDISK	XP	.
		()	.
		?XP		.
	Upgrade		XP	.
				.
		XP		.
			XP	.
				.
			Desktop Remote	.
				.
				.
				.
		XP		.
			Network Browsing	.
XP			ADMINISTRATOR	.

(L2)

XP

(Windows Scripting Host (WSH

XP

?XP

?XP

:

x0000000A IRQL_NOT_LESS_OR_EQUAL Stop

Stop 0x0000001E KMODE_EXCEPTION_NOT_HANDLED :

x00000024 NTFS_FILE_SYSTEM Stop :

Stop 0x0000002E DATA_BUS_ERROR :

Stop 0x0000003F NO_MORE_SYSTEM_PTES :

x00000050 PAGE_FAULT_IN_NONPAGED_AREA Stop :

Stop 0x00000077 KERNEL_STACK_INPAGE_ERROR :

x00000079 MISMATCHED_HAL Stop :

Stop 0x0000007A KERNEL_DATA_INPAGE_ERROR :

x0000007B INACCESSIBLE_BOOT_DEVICE Stop :

Stop 0x0000007F UNEXPECTED_KERNEL_MODE_TRAP :

x0000009F DRIVER_POWER_STATE_FAILURE Stop :

Stop 0x000000C2 BAD_POOL_CALLER :

Stop 0x000000D1 DRIVER_IRQL_NOT_LESS_OR_EQUAL :

Stop 0x000000D8 DRIVER_USED_EXCESSIVE_PTES :

x000000EA THREAD_STUCK_IN_DEVICE_DRIVER Stop :

Stop 0x000000ED UNMOUNTABLE_BOOT_VOLUME :

x000000F2 HARDWARE_INTERRUPT_STORM Stop :

Stop 0xC000021A STATUS_SYSTEM_PROCESS_TERMINATED :

x00000221 STATUS_IMAGE_CHECKSUM_MISMATCH Stop :

(XP

) Hibernate Stand By
ACPI

.

? XP

.

TCP/IP

XP

.

.NT W9X XP -
 : Whisler XP :
 .W2Kpro W9X NT Windows.NET :
 XP NT :
 NTFS5,NTFS4,FAT16,FAT32 : -
 POSIX OS/2 MSDOS,WIN9X,NT4 :
 Amd x86 -
 Windows.NET XP .
 () SMP (symmetric multiprocessing) XP -
 Datacenter Server Windows.NET Windows.NET Advanced Server
 .COW (Cluster Of Workstations) -
 XP -
 .NTFS -
 ISO -
 ARABIC LANGUAGE Unicode
 PACK
 XP -
 .HAL
 XP -
 : XP
 () Windows XP Professional -
 WIN9x .() Windows XP Personal -
 SMP
 () Widows.NET Server -

, () Windows.NET Advanced Server -
.COW

, () Windows.NET Datacenter Server -
.COW

Windows .NET Webservice -

XP -

XP

.XP

XP

XP

XP

XP

XP -

RUN<START

BUILD 2600 XP

.WINVER

Windows Product Activation -

Windows Product Activation

Product ID XP

Code Activation

System <- System tools <- Accessories <- Programs

Activation Pending (XX days remaining)

Activation Status

Information

XX

XP -
 :XP
 Bootable XP -
 Boot sequence
 .
 . -
 .XP i386 winnt.exe -
 XP NT4 W9x -
 i386 winnt32.exe XP setup.exe
 XP XP
 XP :
 XP
 Outlook Express Partition Magic
 Windows\System Winnt\System32
 . About<Help< Outlook Express -
 xp
 :
 winimage winace
 XP
 . XP
 :XP XP
 : XP Home Edition
 XP XP -
 XP Configuration and Power Interface (ACPI Advanced)
 (HAL) XP

inspecting your computer's hardware configuration Setup is :

```

:
.ACPI HAL F5
.ACPI ACPI Multiprocessor PC -
.ACPI ACPI Uniprocessor PC -
.ACPI
.ACPI Advanced Configuration and Power Interface (ACPI) PC -
.ACPI MPS Uniprocessor PC -
.ACPI
.ACPI MPS Multiprocessor PC -
.ACPI ACPI Compaq SystemPro Multiprocessor or 100% compatible -
.ACPI
.ACPI Standard PC -
.ACPI Standart PC with C-Step i486 -
.C-Step i486 ACPI
:
WIN9x XP -
:
XP NTFS
:
MSBATCH.INF -
[Setup]
CleanBoot=0
- .
:
DRIVE\PATH\MSBATCH.INF setup.exe
:
DRIVE\PATH
setup.exe c:\new\msbatch.inf
XP -
:
WINNT\Driver Cache i386 -
xp
WINNT\SYSTEM32 dllcache -
sfc /cachesize=3
System <- Control Panel System Restore -
.Restore for all drives Turn off System <- System Restore <- Properties
```

XP

-

/

notepad : / inf
sysoc.inf HIDE hide

XP

-

CTRL+ALT+DEL :

() Processes () Task Manager
() Priority Set () REAL-TIME
() HIGH
() ABOVE NORMAL
() NORMAL
() BELOW NORMAL
() LOW

.HIGH

NOTEPAD :

echo off start /high %1
high.bat

USER

SENDTO

Walid.B-JH89U2UHJ0HJ3 :

PROFILE

Settings C:\Documents and :

SENDTO

WORD.EXE :

high.bat

NOTEPAD :

PROGRAM PATH

start /high PROGRAM PATH
start /high c:\windows\notepad.exe
PROGRAM.CMD

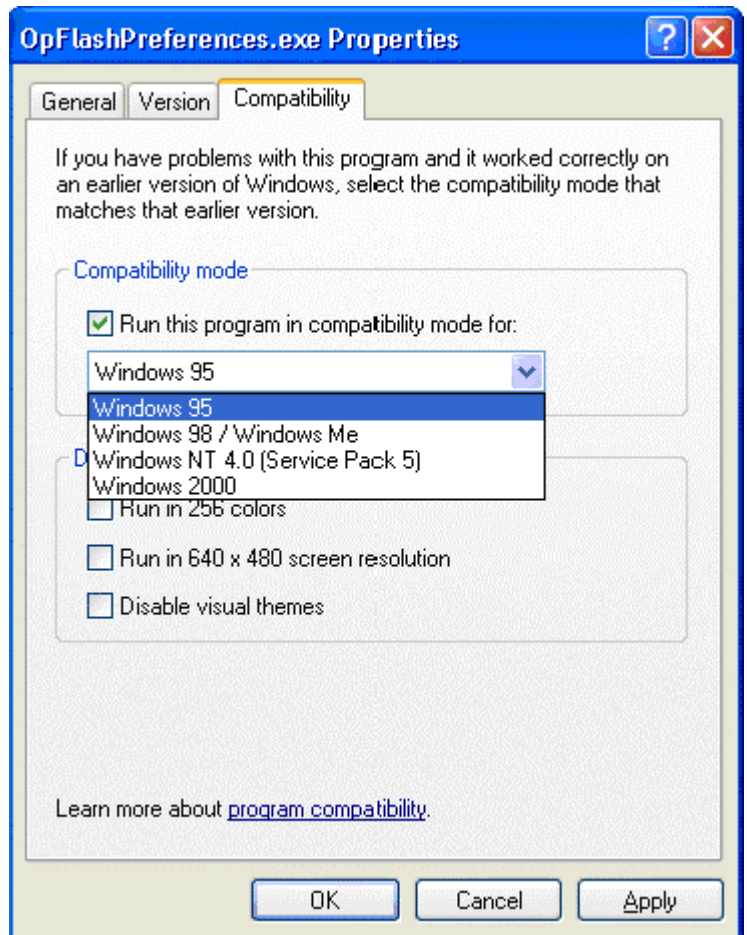
PROGRAM

NOTEPAD.CMD

XP -

(Compatibility) (properties)

compatibility mode for Run this program in:



Start - Programs - Accessories- Program Compatibility Wizard

XP

XP

:XP

<http://www.pcpitstop.com/xpready/xptests.asp>

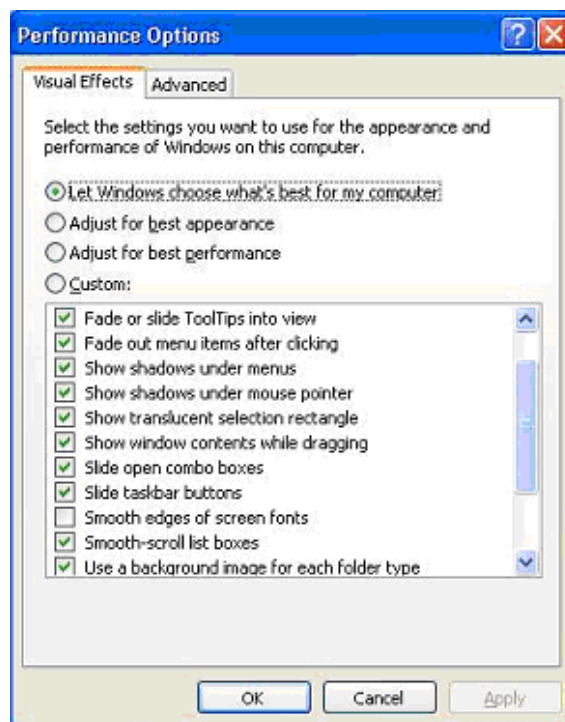
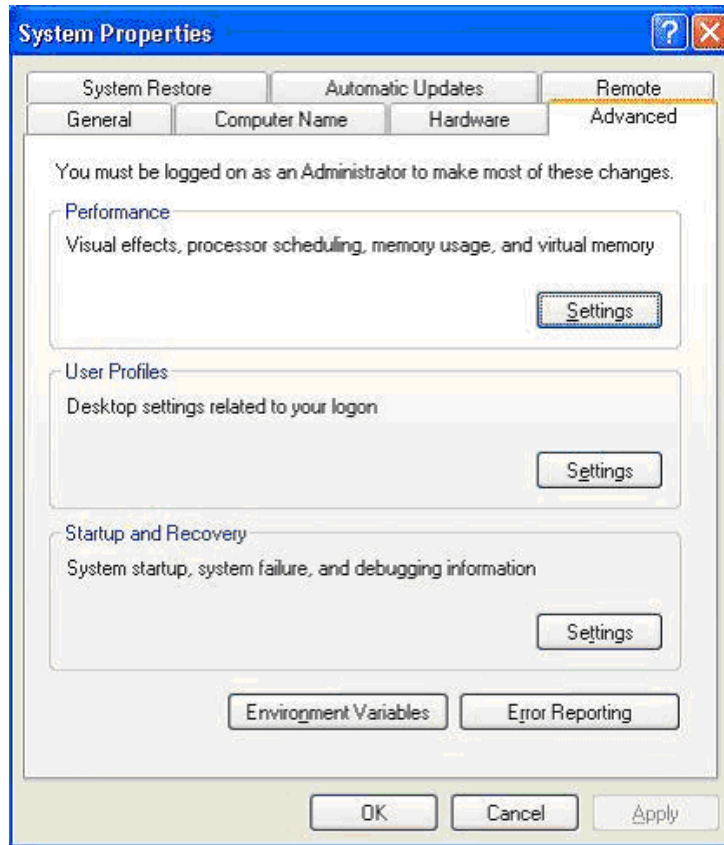
XP

<http://www.microsoft.com/hcl>

XP

XP

: settings performance<advanced<system properties<panel control



Adjust for best performance

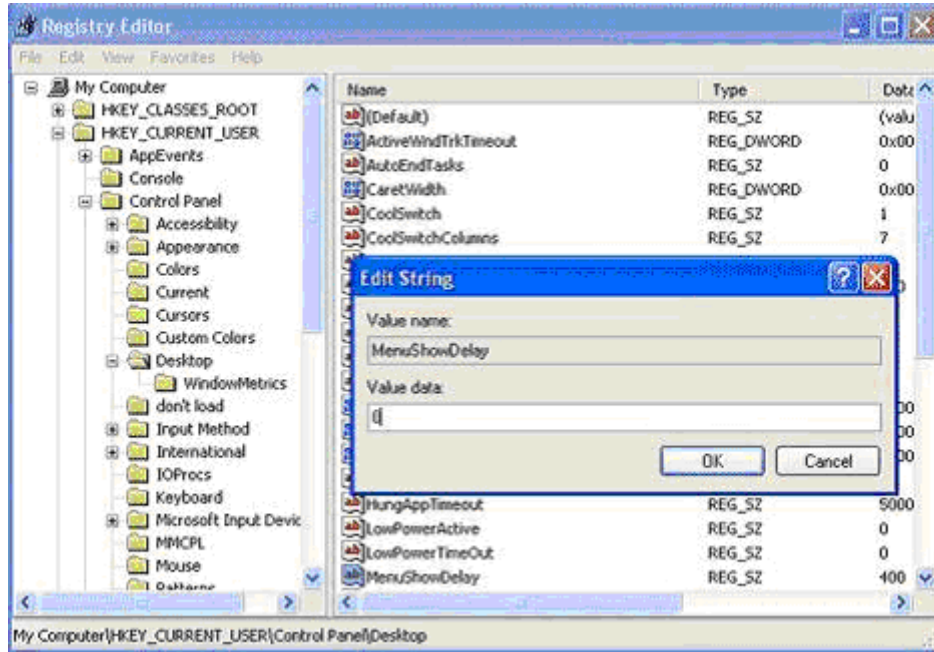
Custom

- HKEY_CURRENT_USER

(regedit run <start)

MenuShowDelay

Desktop <- ControlPanel <



WindowsMetrics <- Desktop <- ControlPanel <- HKEY_CURRENT_USER

MinAnimate

XP

debugger Dr.Watson XP

- KEY_LOCAL_MACHINE

(regedit run< start)

AeDebug <- CurrentVersion <- Windows NT <- Microsoft <- SOFTWARE <

AeDebug

Auto

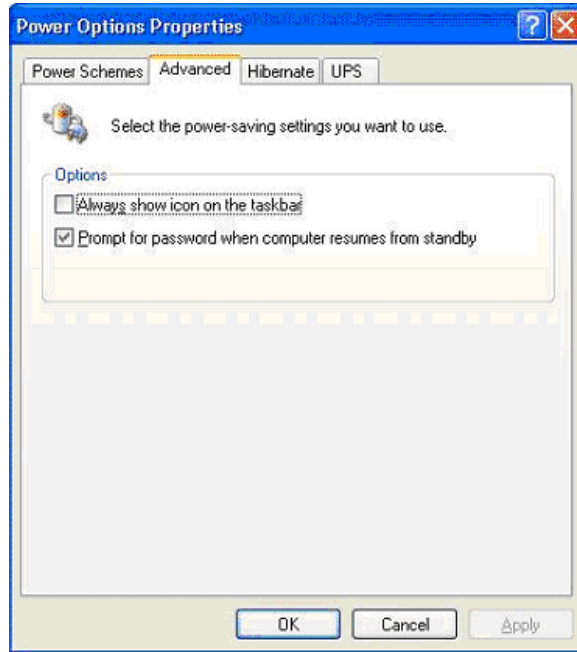
XP

XP

ACPI

Advanced Power Options

: ACPI



NT Apm/Legacy Support

NT

View - Show hidden Devices :

Device Manager

System Propreties

Apm/Legacy Interface Node

NT

Device Manager

Add New Hardware Wizard

run<start)

Apm/Legacy Interface Node

- Windows NT <- Microsoft <- SOFTWARE <- HKEY_LOCAL_MACHINE

(regedit

PowerdownAfterShutdown

Winlogon <- CurrentVersion <

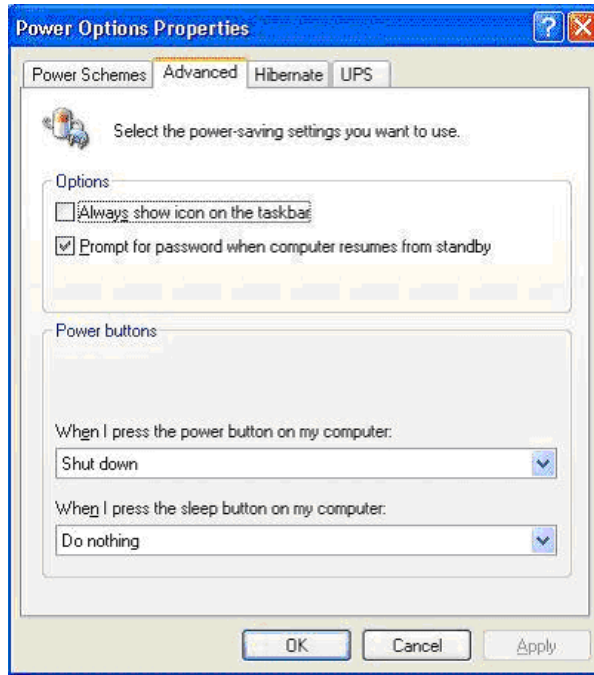
Device Manager

NT Apm/Legacy Interface Node

:

Power Options

ACPI



ACPI

XP

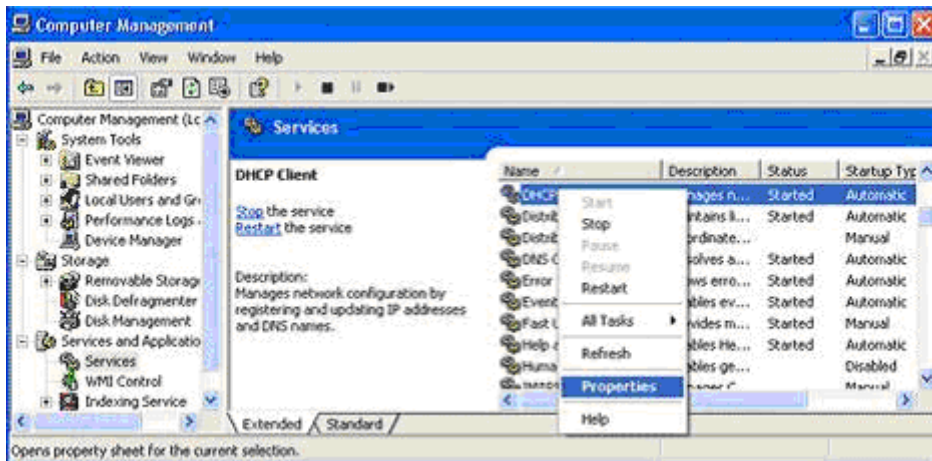
-

XP

Disable

Services

Computer Management



Print Spooler -

Task Scheduler -

Messenger -

Computer Browser-

Remote Registry Service-

(UPS)

Telnet-

Uninterruptible power supply-

Cryptographic Service -

Portable media serial number -

UPnP

SSDP Discovery service -

Windows time -

TIME SERVER

Wireless zero configuration -

XP

XP

XP

XP

Regedit Run<- Start

HKEY_LOCAL_MACHINE \ SYSTEM \ CurrentControlSet \ Control \ Session Manager

BootExecute

* autocheck autochk

.XP

*

My Documents

Windows Explorer

target

Properties

Windows Explorer

shortcut

c:\path

SystemRoot%\explorer.exe /e,c:\path

SystemRoot%\explorer.exe

OK

XP

-

CTRL+C

CTRL+X

CTRL+V

CTRL+Z

DELETE

SHIFT+DELETE

CTRL

CTRL+SHIFT

F2

+CTRL

+CTRL

+CTRL

+CTRL

CTRL+SHIFT

SHIFT

CTRL+A

F3

ALT+Enter

ALT+F4

ALT+Enter

+ALT

CTRL+F4

ALT+TAB

ALT+ESC

F6

.Windows

F4

SHIFT+F10

+ALT

CTRL+ESC

+ALT

F10

.Windows

F5

ESC
SHIFT

XP

-

CTRL+TAB
CTRL+SHIFT+TAB
TAB
SHIFT+TAB
+ALT
ENTER

F1

F4

XP

: -

WIN
WIN+BREAK
WIN +D
WIN +M
WIN+Shift+M
WIN+E
WIN+F
CTRL+ WIN +F
WIN +F1
WIN + L
WIN+R
WIN+U

.Windows

Windows

-

END

HOME

(*)

+NUM LOCK

(+)

+NUM LOCK

(-)

+NUM LOCK

XP

-

SHIFT

PRINT SCREEN+

SHIFT+

ALT

NUM LOCK+

SHIFT+

ALT

SHIFT

SCROLL NUM LOCK

NUM LOCK

.CAPS LOCK LOCK

WIN+U

.OK

Disable error reporting

error reporting< Advanced<System< Control Panel

XP

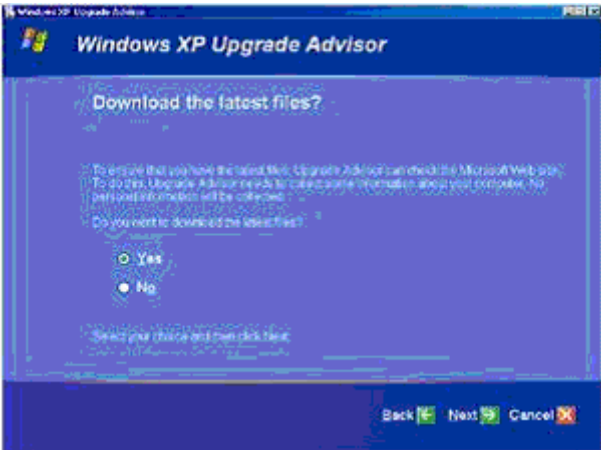
-

<http://download.microsoft.com/download/...N-US/UpgAdv.exe>

Welcome to the Windows XP Upgrade Advisor .

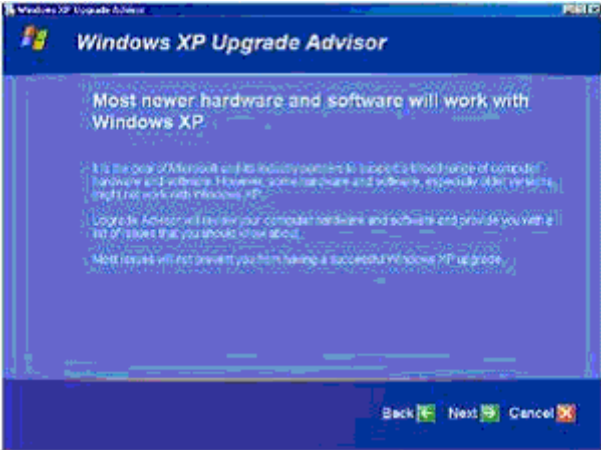


Download the latest files .



.XP

Hardware and software compatibility information .



.XP

Upgrade Advisor report categories .



XP

XP

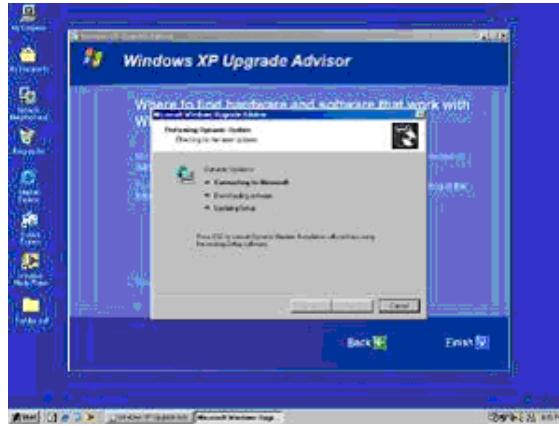
Blocking issues -

XP

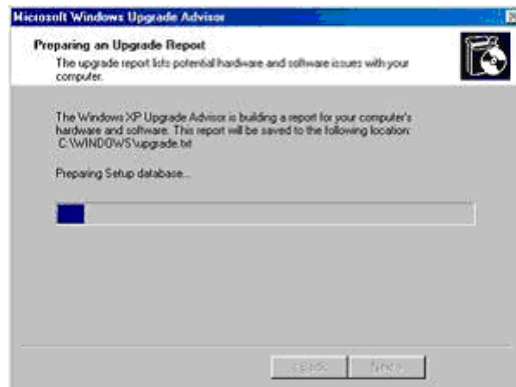
XP

Compatibility warnings -

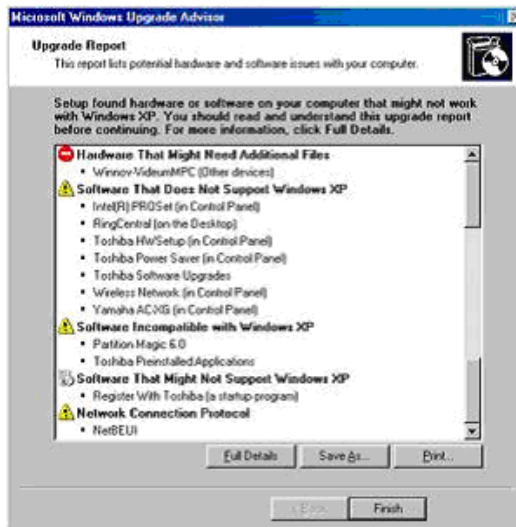
Updating compatibility list with Dynamic Update .



Preparing an Upgrade Report .



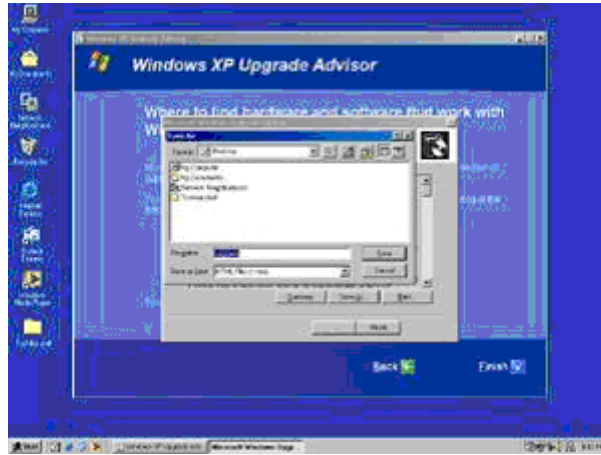
Upgrade Report .



.XP

:

Save the Full Details report .



.XP

XP

-

XP

XP

XP

-

Disk Management

Computer Management tools Administrative

storage

format

DMA

XP

-

IDE ATA/ATAPI Controllers <MANAGER DEVICE<SYSTEM<CONTROL PANEL

PROPERTIES secondary primary

.Use DMA If Available

ADVANCED

XP

-

:

My

My Computer

-

-

Copy the selected items

Tasks File and Folder

Computer

.COPY

My Computer

-

.Write these files to CD

CD Writing Tasks

Files Ready to be Written to the CD

:

SEND TO

XP

-

XP

regedit

run<start

/NT/CurrentVersion HKEY_LOCAL_MACHINE/SOFTWARE/Microsoft/Windows

Microsoft Windows

Microsoft Windows XP

ProductName

.2000

regedit

XP

-

WIN KEY+L

XP

-

:

http://download.microsoft.com/download/...ootVis_file.exe

OPTIMIZE SYSTEM<TRACE :

XP

XP

-

Related Tasks

Accounts User

Control Panel

password reset disk

forgotten password Prevent a

XP

-

XP

.OK

gpedit.msc

Run<Start

Group Policy Editor

XP

NTFS

-

<- HKEY_LOCAL_MACHINE

OK

REGEDIT

RUN<START

DWORD

FileSystem <- Control <- CurrentControlSet <- SYSTEM

NtfsDisableLastAccessUpdate

Dynamic Disk

-

XP

Management Computer

Administrative Tools

:

Disk Management

simple -

spanned -

stripped -

(

mirrored -

ECC

RAID5 -

NTFS FAT32

Convert to Dynamic Disk

) .

(. SCSI (FireWire)
(. , SCSI

boot defrag -

defrag XP boot defrag

RUN<START

HKEY_LOCAL_MACHINE\SOFTWARE\Microsoft\Dfrg\BootOpt regedit
Y Enable imizeFunction
N

XP -

Security Options Administrative Tools - Local Security Policy - Control Panel
(- -)

Interactive logon: Message text for users attempting to log on

log on Interactive logon: Message title for users attempting to

XP -

Windows XP

Microsoft Excel

.LCD

Windows

Windows

NTFS FAT32

-

:

NTFS

Directory Active

FAT32 FAT

NTFS -

Active Directory

NTFS

.NTFS

-

FAT32

(.)

) .

NTFS -

(.FAT32

MFT(Master)

FAT

NTFS

: -

bad sector

MFT

File Table

MFT

-

.DriveSpace

ISO Unicode

-

ASCII

.W9x

Code Page

-

NTFS

NTFS

-

chkdsk.exe

-

FAT32 FAT

FAT32 FAT

Windows XP

Windows

Windows

()

Service Pack 4 Windows NT 4.0 Windows 2000

.NTFS

NTFS

Pack 4 Service Windows NT 4.0

Windows

NTFS

:

FAT32

NTFS

NT 4.0

FAT32

.NTFS

: NTFS FAT32

drive_letter: /fs:ntfs convert

.ntfs

D:

convert D: /fs:ntfs

FAT32 NTFS

PARTITION

.MAGIC 7





Windows XP Professional

:

:() Guest

Windows XP Guest

Guest

Guest

Guest

.Guest

.Guest

Guest

XP

Windows XP

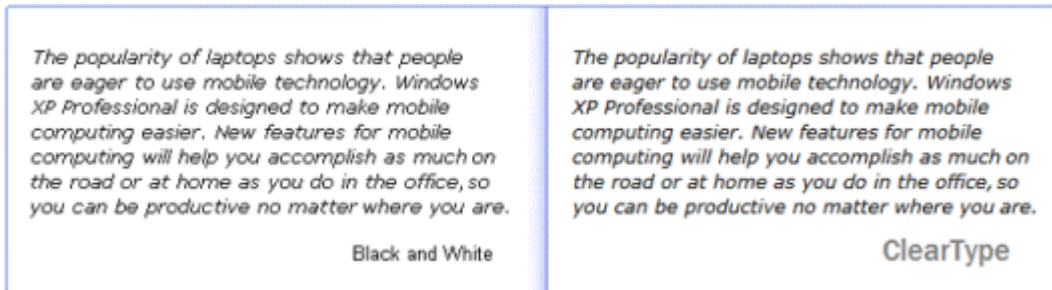
LCD

LCD

ClearType

XP

: ClearType



: ClearType

ClearType

ClearType

<http://www.microsoft.com/typography...ypeactivate.htm>

XP

FTP SERVER

Windows

/

Service File Transfer Protocol (FTP)

(Internet Information Services (IIS

FTP

FTP

IP

:IP

IP

IP

:TCP

FTP

IP

خصائص موقع وليد

موقع FTP حسابات الأمان رسائل الدليل الرئيسي أمان الدليل

التعريف

الوصف: موقع وليد

عنوان IP:

منفذ TCP: ٢١

الاتصالات

غير محدد

محدد بـ: اتصال ثانية

مهلة الاتصال:

تمكين تسجيل الدخول

تنسيق السجل النشط:

تنسيق ملف سجل W3C الموسع خصائص...

جلبت العمل الحالية...

تعليمات تطبيق إلغاء الأمر موافق



: FTP

c:\FTP :



FTP

IP



IP

ftp://212.66.77.111

FTP

XP

.(ICS)

Microsoft® Windows® XP

ICS

ICS

Microsoft Windows XP :

.Windows XP " "

ICS

:

Shared Files

.Control Internet Connection Sharing Discovery and

: ICS Windows XP " "

()

ICS

.Windows XP

" "

Windows XP

.ICS

" "

:

.(A:)

.netsetup.exe

!.

XP

Local Policies, Security Options<Security Policy Local<Administrative Tools -
 .DISABLE Shutdown: Clear virtual memory pagefile when system shuts down -
 HKEY_CURRENT_USER\Control regedit Run<Start -
 WaitToKillAppTimeout Panel\Desktop -
 regedit Run<Start -
 HKEY_LOCAL_MACHINE\System\CurrentControlSet\Control l
 .Driver Helper service Nvidia -
 Intel Ambient HaM modem -
 .XP -

XP

F8 -
 Windows
 Microsoft VGA)
 .(Windows
 :
 Safe Mode -
 ; ; ;)
 (; ; ;
 Safe Mode with Networking -
 Safe Mode with Command Prompt -
 .Windows
 Enable Boot Logging -

()

ntbtlog.txt

Enable VGA Mode -

VGA

Windows

Last Known Good Configuration -

Windows

Last Known Good Configuration

Directory Service Restore Mode -

Active Directory

SYSVOL

Debugging Mode -

Windows

XP

Notepad

Windows Registry Editor Version 5.00

[HKEY_LOCAL_MACHINE\SYSTEM\CurrentControlSet\Services\Dnscache\Parameters]

CacheHashTableBucketSize"=dword:00000001"

CacheHashTableSize"=dword:00000180"

MaxCacheEntryTtlLimit"=dword:0000fa00"

MaxSOACacheEntryTtlLimit"=dword:0000012d"

dnscache.reg :

gpedit.msc

administrative templates

() local computer policy

limit

Packet Scheduler QoS

network

()

% Bandwidth limit

enabled

reservable bandwidth

XP

-

.Boot.ini

bootcfg

defrag

diskpart

driverquery

eventcreate

eventquery

eventtriggers

fsutil

(MAC)

getmac

and Support Center Help

helpctr

(IPSec)

ipseccmd

Microsoft (MMC)

Ipseccmd

logman

openfiles

pagefileconfig

Windows NT 4.0

perfmon

prncnfg

prndrvr

prnjobs

prnmngr

TCP/IP

prnport

prnqctl

() text-TSV

relog

.SQL binary-BIN (

) text-CSV

sc

schtasks

shutdown

systeminfo

taskkill

(PID)

tasklist

tracert

() CSV

.WMI	Windows Management Instrumentation (WMI)	typeperf WMIC
		XP -
	:	XP
:	Windows	-
		.hcp://help/tshoot/tssetup.htm
		/
		.hcp://help/tshoot/tsstartup.htm:
		:
:		.hcp://help/tshoot/tsdisp.htm
		:
		.hcp://help/tshoot/tshomenet.htm :
)	:
)	(DVD
	USB	(
.hcp://help/tshoot/tshardw.htm :		
DirectX		:
	(DVD)	USB
		.hcp://help/tshoot/tsgame.htm :
	DVD	:(DVD)
		.hcp://help/tshoot/ts_dvd.htm :
		:
.hcp://help/tshoot/tsinputdev.htm :		
		:
	DVD	
		.hcp://help/tshoot/tsdrive.htm :
:	USB	:USB -
		.hcp://help/tshoot/tsusb.htm
:		:
		.hcp://help/tshoot/tssound.htm
		:
		.hcp://help/tshoot/tsmodem.htm:

(ISP)

:

-

.hcp://help/tshoot/tsics.htm:

:Internet Explorer -

.hcp://help/tshoot/tsie.htm :

IE

Windows Express Outlook

: Outlook Express (Messaging) -

.hcp://help/tshoot/tsmessaging.htm :

Messenger Service

:

-

.hcp://help/tshoot/tsnetwrk.htm :

:

-

.hcp://help/tshoot/tsprint.htm :

XP

-

SupportTools

XP

Winzip

(Extract)

DEPLOY.CAB

XP

setupmgr.exe

unattend.txt winnt.sif :

:

[UserData]

unattend.txt

ProductID=FCKGW-RHQQ2-YXRKT-8TG6W-2B7Q8

unattend.txt

)

XP

(winnt.sif

XP

XP

"

"

XP

-

" " USERS control userpasswords2 :
" password to use this computer Users must enter a user name and
"

XP

-

(ICF)

ICF

ICF

.ICF

ICF

ICF

ICS

ICF/ICS

ICF

ICF

ICF

ICF

.ICF

Outlook Express

ICF

Outlook Express

(RPC)

Microsoft Exchange

Office 2000 Outlook

Office 2000 Outlook

RPC

Office 2000 Outlook

Exchange

Office 2000 Outlook

RPC

ICF

.RPC

ICF

ICF

:

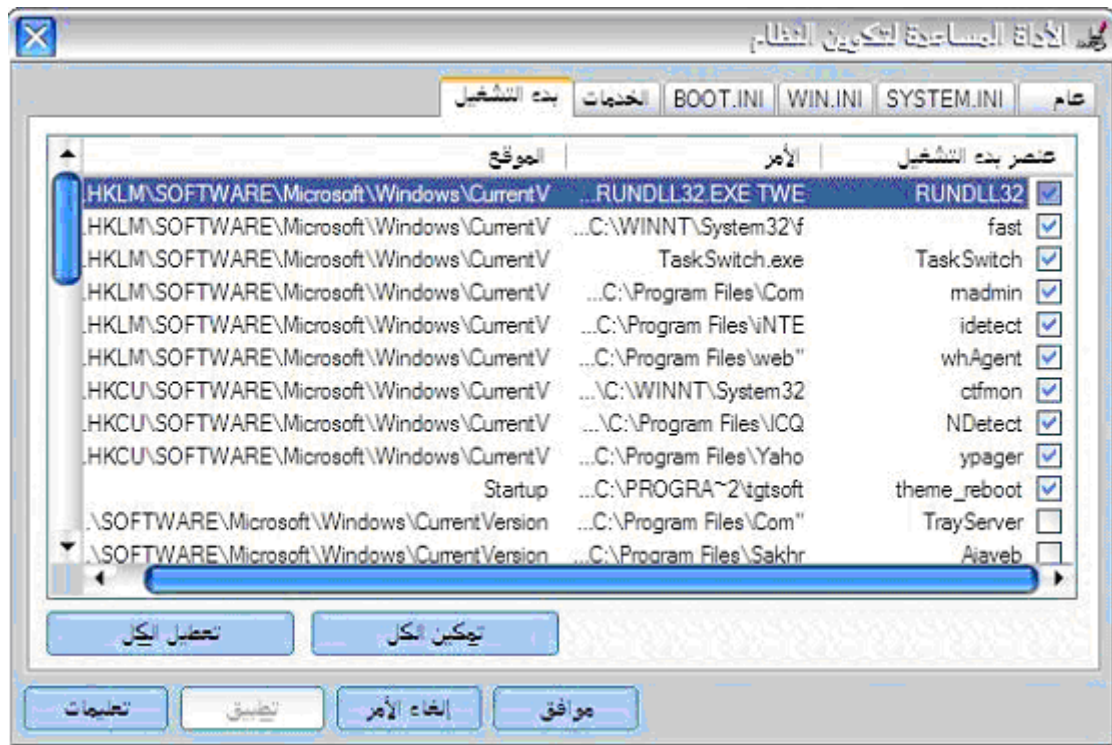
:

(ICF)

-

(Start up)

msconfig



regedit

MICROSOFT \ WINDOWS \ CURRENTVERSION \ RUN \ HLKM \ SOFTWARE \ :

XP

XP

XP

Microsoft

:Windows

Windows

,Welcome

.\Support\Tools

.Setup.exe

(Status Bar)

-

"Explorer "

-

:

-

-

:

winzip

Zip

-

.ZIP

.ENTER

ZIP

-

XP

-

Microsoft

:
) Internet Explorer ,
(
() Outlook Express ,
Microsoft Outlook Microsoft Word 2002 Microsoft Office XP
.Microsoft

: Microsoft Office XP

Microsoft Office XP

.Office

pic1,pic2,pic3....picn :

F2

pic2 pic1

pic3

XP

-

regedit

HKEY_LOCAL_MACHINE\System\CurrentControlSet\Services\Tcpip\Parameters

:
TcpTimedWaitDelay

:
DWORD Value

TcpTimedWaitDelay DWORD

XP

config.sys

autoexec.bat

-

config.nt autoexec.nt

:

System32

config.sys autoexec.bat

-

:
regedit

HKEY_CURRENT_USER\Software\Microsoft\Windows\CurrentVersion\Explorer
DesktopProcess :

:

DesktopProcess DWORD

XP

-

XP

-

:

XP

-

:

- -

-

,Windows

risk but still want to share the If you understand the

.root of the drive, click here

:

-

-

,Guest

-

-

.WINDOWS ,Program Files ,Documents and Settings

-

Domain

\$

'Windows'

view net

/ /

gpedit.msc

Prohibit access to the Control Panel

-

/ / /

gpedit.msc

Prevent deletion of printers

-

/ /

gpedit.msc

Remove and prevent access to the Shut Down command

-

XP

.Windows Virtual DOS Machine

Windows XP

DOS

-

DLLs

VDM

VDM

VDM

"

"

NTVDM

.Run

/ /

gpedit.msc

in Separate Memory Space" check box to Run dialog box Add "Run

XP

Backup

-

:

XP

Drive:\VALUEADD\MSFT\NTBACKUP\NTBACKUP.MSI

Install

.Backup

Ports(COM&LPT) +

XP

-

(Printer Port (LPT1

" "

XP

-

Microsoft Windows XP

Messenger Windows

Windows Messenger

: Windows Messenger

:

Windows Messenger

-

Windows Messenger

-

Ask for Remote Assistance

Tools

-

Accept

Show Chat

Take Control

:

:

-

-

.Continue

.Take Control

FTP

.Take Control

user account restrictions Logon :

-
failure

: regedit
HKEY_LOCAL_MACHINE\SOFTWARE\Microsoft\Windows\CurrentVersion\WindowsUpdate
: System Administrator

:
HKEY_CURRENT_USER\Software\Microsoft\Windows\CurrentVersion\Policies\Explorer
:
.NoWindowsUpdate

XP

-

MS-DOS

?XP

-

XP

:

System/

/

gpedit.msc

Windows

Installation file location Specify Windows

:Setup file path

-

System/

/

gpedit.msc

Verbose vs normal status messages

-

/Windows Components/

/

gpedit.msc

Computer Hide these specified drives in My

Explorer Windows

Restrict all drives

-

/

-

Windows

/Windows Components/

/

gpedit.msc

Places Bar Items displayed in

Common Open File Dialog

Explorer Windows

:

(C:\Windows .) ()
(server\share\) ()
Shell ()
Shell

MyDocuments MyComputer Desktop CommonPictures CommonMusic CommonDocuments
.Recent ProgramFiles Printers MyPictures MyNetworkPlaces MyMusic MyFavorites

() XP -
XP

<http://members.aol.com/gvollant/bootpa22.zip>

BOOTPART WINNT BOOT:C:

XP -
onsole; #& Recovery XP
FIXBOOT
()

XP -
scannow/ sfc :

DSL -

XP NetMeeting -
conf

XP

-

Domain Member: Maximum machine Account password age :

accounts /maxpwage:unlimited net

Upgrade

XP

-

.XP

Upgrade

XP

-

XP

XP

XP

XP

Files and Settings Transfer Wizard

XP

XP

XP

Upgrade

Files and Settings Transfer Wizard

XP

UNINSTALL

-

UPGRADE

XP

.UNINSTALL WINDOWS XP

/

Safe Mode with

F8

osuninst.exe

WINDOWS\SYSTEM32

Command Prompt support

Enter

XP

-

:

...

-

-

?XP

(DRIVERS)

-

: Nvidia Detonator XP v21.83 -
<http://www.nvidia.com/view.asp?PAGE=windows2000>
: Audigy Sound Blaster Live -
[/http://www.soundblaster.com/support/winxp](http://www.soundblaster.com/support/winxp)

<http://www.europe.creative.com/supp...vers/latest.asp>
:HP -
<http://www.hp.com/cposupport/software.html>
: Logtech Mouseware® v9.41.2 -
http://www.logitech.com/cf/support/mousefiles_wxp.cfm
: Easy CD Creator 5.0x Platinum -
<http://www.roxio.com/en/support/ecdc/ecdcupdates.jhtml>
:
ATI -
<http://support.ati.com/issuetype/driverdirect.html>
:Microsoft AMD Fix -
<http://support.microsoft.com/suppor...s/Q306/4/58.ASP>
:Epson Photo 890 -
<http://support.epson.com/hardware/p...o890/index.html>
:Logtech Quickcam 6.00 -
<ftp://ftp.logitech.com/pub/techsupp...am/qc600enu.exe>
:Phillips 706/705/703 Sound -
<http://www.pcsound.philips.com/english.html>
:Hauppauge WinTV -
<http://www.hauppauge.com/xp/software/index.htm>
:NEC VIA AC97 Sound -
<ftp://ftp.nec-computers.com/pub/ite...IOXP5123030.exe>
: VIA -
<http://www.viahardware.com/download/index.shtm>
:Matrox G400/450/500 -
http://www.matrox.com/mga/support/d...les/w2k_572.cfm
:Hercules Game Theater -
ftp://ftp.hercules.com/sound/exe/GTXP/GTXP_301_FULL.EXE
: Voodoo3 W/Glide -
<http://www.ntcompatible.com/3dfxfaq.shtml>
:NEC ESS Allegro-1 Sound -
<ftp://ftp.nec-computers.com/pub/ite...0/j2ixp1142.exe>
:Terratec Audio -
<http://www.terratec.de/support/treiber.htm>
:Visioneer Scanners -
<http://support.visioneer.com/customer/winxp.html>

:Intel Pocket Concert -
<http://support.intel.com/support/pe...rt/software.htm>
:Gainward Detonator 21.81 -
<ftp://ftp.gainward.com/Vga/Driver/N...181/Win2kxp.zip>
: PCI -
<http://www2.driverguide.com/files/u...indows%20XP.exe>
:Rockwell/Conexant HCF Internal PCI, for Windows XP -
<http://www.askey.com/drivers/staff/96-C807253.zip>
SoftK56 Rockwell/Conexant HSF for Windows XP -
<http://www.askey.com/drivers/staff/xp/r410xpi.zip>
: XP dmax 4.0 -
<ftp://adeskftp.autodesk.com/prodsup...s/RTS324000.exe>
: Windows XP Creative Blaster -
<http://www.modemblaster.com/download/drivers.asp>
chaintech bios -
AMD XP Support MAINBOARD
<http://www.chaintech.com.tw/BIOS/BIOSUPD8.htm>
Avance Logic ALS4000 : -
<http://www2.driverguide.com/files/u...13371/winxp.exe>
: Yamaha -
<http://www.yamaha.com/lsi/support/downloads.htm>
: Genius -
http://www.geniusnet.com.tw/download/download_index.htm

XP

Microsoft Virtual Machine

.Windows

XP

< < < <

BAR

.CTRL+SHIFT+SPACE

Windows XP Multilanguage Pack -

XP

Windows XP Multilanguage Pack

XP

XP

. %

Windows XP Multilanguage Pack

Menus Languages Regional and Languages Settings <Control Panel<Start
Local XP OK dialogs and

XP

winnt32.exe

sourcepath

XP

/s: sourcepath -

/makelocalsource -

winnt32 / makelocalsource / s: c: \i386

/tempdrive: drive_letter -

c

.XP

/checkupgradeonly -

/m -

m

Recovery Console

/cmdcons-

.XP

/noreboot-

/syspart:drive_letter -

XP

.XP

NT4

Upgrade

/unattend-

%

XP

User Profile

TEMP

< < < <

TEMP

C:\Windows\TEMP

TMP

TEMP

-

drives DVD/CD-ROM + IDE XP < < < <

IP /x **WINIPCFG.EXE** **XP** -

. ipconfig.exe

Windows Messenger **XP** -

XP **MSN Messenger**

.Windows Update Messenger Windows

Administrator **XP** -

XP

.CTRL+ALT+DEL

-

' ' : () , , : .() , , :

?XP -

<

() XP -

< XP

: ():

." " :

Windows Media Player -

C) C:\Program Files\Windows Media Player\setup_wm.exe : < .(

Windows Installer -

SFC /SCANNOW Start/Run regsvr32 msi.dll Start/Run

XP -

< < <

:

: < < <

: < < <

.()

com)

(

-

.NetBIOS

NetBIOS

NetBIOS

..INF device

.INF device

..INF device

<MESSAGE>

.INF device

<DEFAULTOFF>

.INF

INI

.INF

.INI

.INF

.INF

..INF device

.INI

.INI

.INI

.INI

.INI

.INI

.INI

.INI

.INI

/

.INF

.COM

.X.25

ISDN

ISDN

IP

IP

IP

.PPP

IPX

.IP

IP

SLIP

.PPP

.PPP

.PPP

W P T

:

@ - ()

IP

IP

IP

LAN

IP

" "

(NAT)

LAN

LAN

L2TP

L2TP

L2TP

L2TP

L2TP

L2TP
 L2TP
 L2TP
 .PPP Framed Protocol RADIUS
 Tunnel Type RADIUS
 .Callback Framed Framed Service Type RADIUS

ICS IP (ICS)
 VPN .VPN

shutdown

shutdown

shutdown [{-l|-s|-r|-a}] [-f] [-m [\\ComputerName]] [-t xx] [-c "message"]

-l

-s

-r

-f

-m [\\ComputerName]

xx

-t xx

-c "message"

.t

-a

-a

\\MyServer

shutdown -r -f -m \\MyServer -t 60

? XP

-

ms-its:C:\WINNT\Help\MUI\0401\glossary.chm::/glossary_pro.htm
XP c:\winnt

"Access denied "

Home Edition

-

Administrator
"Security "

Safe Mode F8

XP

-

Internet <Windows

<

gpedit.msc

<

< Explorer

XP

-

Internet <Windows

<

gpedit.msc

<

< Explorer

x x

x x

XP

-

Internet <Windows

<

gpedit.msc

<

< Explorer

XP

-

Internet Explorer <Windows

<

gpedit.msc

<

<

CDRom -

: regedit <

HKEY_LOCAL_MACHINE\System\CurrentControlSet\Control\Class\{4D36E965-E325-11CE-BFC1-
{08002BE10318

Winkey+Break LowerFilters / UpperFilters cdrom
Device CD

XP -

: regedit <

HKEY_LOCAL_MACHINE\SYSTEM\CurrentControlSet\Control\Session Manager
.autocheck BootExecute:

XP -

STOP error

(Driver) BSOD Blue Screen of Death
SCSI ATA-100 ATA-66 IDE
XP

F6

() -

< < < <

XP -

Services Windows /

Network File and Print Other

(System Restore) -

regedit

<

:

HKLM\System\CurrentControlSet\Control\BackupRestore\FilesNotToBackup

< <

boot.ini -

c:\boot.ini :

c:\boot.ini

<

<

. :

:

:

[boot loader] :

Timeout

Default

[operating system] :

:

XP

VGA

XP

/basevideo

Plug and Play

/fastdetect

.XP

.XP

/noguiboot

.Windows\Nbtlog.txt

/bootlog

XP

/safeboot

XP

/sos

.boot.ini

msconfig

<

XP

-

c:\boot.ini

<

timeout=30 : -

XP

-

Administrator

XP

:

.NET Server

XP PRO

:

NTFS

-

()

-

.()

-

) NTFS

-

(Administrator GUEST

)

lusrmgr.msc

<

"

"

"

"

).

.(

"

-

gpedit.msc

<

:

() GroupPolicy

system32

gpedit.msc

()

XP

-

Regional and Language settings

Control Panel

Arabic

Regional Settings

Additional Languages

Languages

Location
Support

Arabic

Unicode

Advanced

XP

).

(.



regedit

HKLM\SYSTEM\MountedDevices

"DosDevices\D:"

"DosDevices\Z:"

XP

-

IDE

<

Controller

Controllers ATA/ATAPI

Standart Dual

Controller Channel PCI IDE

XP

-

"

<

"

XP

-

XP

<

<

PnP

(Driver)

XP

NTFS

XP

-

.Partition Magic 7

FAT32

fdisk.com

sys.com

:

sys a: c: fdisk /mbr

XP

-

:

regedit

<

HKEY_CURRENT_USER\Software\Microsoft\Windows\CurrentVersion\Policies\Explorer
NoLowDiskSpaceChecks (DWORD < <)

regedit <
HKEY_LOCAL_MACHINE \ SYSTEM \ CurrentControlSet \ Services \ CDROM
Autorun

.Update Windows) -
Windows Update -
Update Windows -
.Update Windows : -
.Windows Update : -
(HOME PRO) XP -

Media Player Windows

mp3

wma

mp3.reg

Windows Registry Editor Version 5.00
[HKEY_LOCAL_MACHINE\SOFTWARE\Microsoft\MediaPlayer\Settings]
[HKEY_LOCAL_MACHINE\SOFTWARE\Microsoft\MediaPlayer\Settings\MP3Encoding]
MediumHighRate"=dword:0001f400 " LowRate"=dword:0000dac0 "MediumRate"=dword:0000fa00"
"HighRate"=dword:0002ee00
Windows Media Player

.mp3

?(Bootable)

XP

Burning ROM Nero

regedit

HKEY_CURRENT_USER\Software\ahead\Nero - Burning ROM\General
AddISOFileVersion

<http://mypage.ayna.com/walidouda/xpboot.img>

.New<File

Nero Burning ROM

(CD-ROM (Boot CD

Source of Boot Image image file BOOT

.(xpboot.img)

Browse

Data

MICROSOFT

Boot Message

NO EMULATION

Enable Expert Settings

Sectors Number of Loaded

C0

Load Segment

CORPORATION

Data Preparer

Publisher

WXPVOL_EN

Volume Label

LABEL

. MICROSOFT_CORPORATION

. Disc-At-Once - Write Method

Finalize CD

Write

BURN

ISO

ISO level 1, Mode 1, ISO 9660, Joliet

Write CD

New

.Write CD <File

XP

Write

<

<

eventvwr

:

: Your account is configured to prevent you from using this computer

.Safe Mode

Administrator

< < secpol.msc <
:
:
:
C:\windows\inf\ie.inf rundll32.exe setupapi,InstallHinfSection DefaultInstall 132
XP C:\windows

Restore Points

< < < <
:
:
:
XP
d:\i386\winnt32 /s:d:\i386 /makelocalsource
d:\i386

Recovery Console

: < XP
d:\i386\winnt32.exe /cmdcons
d
Recovery Console
.XP

Recovery Console

- : Attrib
- : Batch
- (boot.ini) : Bootcfg
- : ChDir (Cd)
- : Chkdsk
- : Cls
- : Copy
- : (Del) Delete

```

: Dir
: Disable
: Diskpart
: Enable
: Exit
: Expand
.( )
.( )
: Fixboot
: Fixmbr
: Format
: Help
: Listsvc
.Windows
: Logon
: Map
: (Md) Mkdir
: More
: Net Use
: (Ren) Rename
: (Rd) Rmdir
: Set
Systemroot
: Systemroot
: Type

```

Recovery Console

```

< <
: <
Recovery console: Allow floppy copy and access to all drives and folders
: Recovery console
SET AllowAllPaths = TRUE

```

XP

```

< <

```

<

:

Enter

systeminfo

cmd

<

System Up Time

Standby

<

Windows XP Home Edition Administrator

XP

Recovery Console

Windows XP Home Edition

Administrator

Administrator

Windows XP Home Edition

<

Safe Mode

Administrator

Administrator

<

secpol.msc

<

:

Administrator

:

Ctrl+Shift+Esc

Helpctr.exe

System File Checker (sfc)

(<)

[/purgecache] [/cachesize=x] [sfc [/scannow] [/scanonce] [/scanboot] [/revert

:
/scannow

/scanonce

/scanboot

/revert

/purgecache

Windows File Protection

/cachesize=x

.Windows File Protection

/?

:

.sfc Administrators

sfc -

%systemroot%\system32\dlldata

sfc sfc /scannow

%systemroot%\system32\dlldata -

.Dllcache

sfc /scanboot /scanonce

?Chkdsk

Chkdsk

Chkdsk

chkdsk

(cmd <)

:

[/l[:size]] chkdsk [volume:][[Path] FileName] [/f] [/v] [/r] [/x] [/i] [/c]

:
volume:

, ()

[Path] FileName

chkdsk

(? *
/f

chkdsk

/v

/r

/x

NTFS

./f /x

/i

NTFS

.chkdsk

/c

NTFS

.chkdsk

/l[:size]

/l

NTFS

/?

:

: chkdsk

.Administrators

chkdsk

:

chkdsk

:

like to schedule this Chkdsk cannot run because the volume is in use by another process. Would you
Y/N) ?volume to be checked the next time the system restarts

chkdsk ,
chkdsk ,

Chkdsk .NTFS (FAT)

Chkdsk

/f chkdsk
chkdsk

Chkdsk ./f Chkdsk

: chkdsk
.lost allocation units found in 3 chains
?Convert lost chains to files

.Filennnn.chk

Windows ,Y

,N

, chkdsk

Windows

chkdsk ./f

(,) chkdsk /f

(,) chkdsk ,(,)

chkdsk

: FAT

:

FAT

chkdsk

Windows

Volume Serial Number is B1AF-AFBF

72214528 bytes total disk space

73728 bytes in 3 hidden files

30720 bytes in 12 directories

11493376 bytes in 386 user files

61440 bytes in bad sectors

60555264 bytes available on disk

2048 bytes in each allocation unit

35261 total allocation units on disk

29568 available allocation units on disk

: NTFS

:

NTFS

chkdsk

Windows

The type of the file system is NTFS.

CHKDSK is verifying files...

File verification completed.

CHKDSK is verifying indexes...

Index verification completed.

CHKDSK is verifying security descriptors...

Security descriptor verification completed.

12372 kilobytes total disk space.

3 kilobytes in 1 user files.

2 kilobytes in 1 indexes.

4217 kilobytes in use by the system.

8150 kilobytes available on disk.

512 bytes in each allocation unit.

24745 total allocation units on disk.

16301 allocation units available on disk.

chkdsk /f

chkdsk /f

chkdsk

r/

,recover

chkdsk

chkdsk

./f

./f

:

:

Windows D

chkdsk d: /f

Chkdsk

chkdsk

chkdsk

:

FAT

chkdsk *.*

recover

recover [Drive:][Path] FileName

Drive:][Path] FileName]

/?

recover

.recover (? *)

"bad"

chkdsk

recover

: D:

/Fiction

Story.txt

recover d:\fiction\story.txt

FDISK

XP

.DiskPart

XP

FDISK

(, ,)

DiskPart.exe

DiskPart.exe

DiskPart.exe

list ,list volume ,list disk

list partition

volume list list disk

.partition

(*) ,list

volume ,volume 3 ,partition 1 ,disk 0

.C

```

,disk 0
    .disk 2, volume 8 disk 0
    ,disk 2 volume 8
    ( )
    /
    (active)
    (EFI)
    Intel Itanium (EFI)
    ) GPT (EFI)
    BIOS Itanium EFI (.GUID
    (. x86
    EFI
    :
    DiskPart
    DiskPart
    "active"
    .active :
    add disk :
    )
    .( )
    :
    add disk=n [noerr]
    :
    n
    noerr

```

DiskPart

DiskPart

,noerr

assign :

,assign

Original Equipment Manufacturer)

MSDATA

Partition Table (GPT) GUID

(OEM

:

assign [{letter=d|mount=Path}] [noerr]

:

letter=d

mount=Path

noerr

DiskPart

DiskPart

,noerr

break disk :

,nokeep

:

break disk=n [nokeep] [noerr]

:

n

nokeep

noerr

```

DiskPart
DiskPart
, master boot record (MBR)
, GUID Partition Table (GPT)
, Protective MBR
MBR
, GPT
:
clean [all]
:
all

convert basic :
:
convert basic [noerr]
:
noerr

DiskPart
DiskPart
, noerr
convert dynamic :
:
convert dynamic [noerr]
:
noerr

DiskPart
DiskPart
, noerr
convert gpt :
, Itanium
)
, (GPT) GUID partition table
(
:
, GPT
:

```


convert gpt [noerr]

:

noerr

DiskPart

DiskPart

,noerr

convert mbr :

,Itanium

GUID Partition Table (GPT)

.(MBR) master boot record

:

.MBR

:

convert mbr [noerr]

:

noerr

DiskPart

DiskPart

,noerr

create partition efi :

(EFI)

,Itanium

.GUID Partition Table (GPT)

:

create partition efi [size=n] [offset=n] [noerr]

:

size=n

offset=n

noerr

DiskPart

DiskPart

,noerr

create partition extended :

:

create partition extended [size=n] [offset=n] [noerr]

:

size=n

offset=n

master boot record (MBR)

noerr

DiskPart

DiskPart

,noerr

create partition logical :

:

create partition logical [size=n] [offset=n] [noerr]

:

size=n

offset=n

master boot record (MBR)

)

.(

.size=n

noerr

DiskPart

DiskPart

,noerr

create partition msr :

GUID

Reserved (MSR) Microsoft

,Itanium

.Partition Table (GPT)

:

GPT

.create partition msr

Windows XP

GPT

Microsoft reserved

GPT

.Reserved Microsoft

EFI

,Edition 64-Bit

Microsoft Reserved

;EFI

.Microsoft reserved

Windows XP 64-Bit Edition

:

create partition msr [size=n] [offset=n] [noerr]

:

size=n

.size=n

offset=n

; .offset=n

noerr

DiskPart

DiskPart

,noerr

create partition primary :

assign

:

create partition primary [size=n] [offset=n] [ID={byte|GUID}] [noerr]

:

size=n

offset=n

,master boot record (MBR)

ID={byte|GUID}

.Original Equipment Manufacturer (OEM)

:

IT OEM

.ID=byte | GUID

GPT

,GPT

Microsoft

partition msr create

,EFI

create partition efi

(ID=byte | GUID

) create partition primary

,Reserved

```

,MBR .GPT
.x6 create partition primary ,MBR
.ID DiskPart .ID=byte | GUID
: GUID GPT
c12a7328-f81f-11d2-ba4b-00a0c93ec93b : EFI
e3c9e316-0b5c-4db8-817d-f92df00215ae : Microsoft reserved
: Microsoft reserved
MSR .(GPT ) GUID
GPT
.GPT MSR .(LDM) MSR
MSR MSR
MSR MSR
ebd0a0a2-b9e5-4433-87c0-68b6b72699c7 : MSDATA
c8aa-7e8f-42e0-85d2-e1e90434cfb3 : LDM Metadata
,GUID af9b60a0-1431-4f62-bc68-3311714a69ad : LDM Data
ID={byte | .MSDATA create partition primary
.ID ,GUID DiskPart .GUID}
noerr
DiskPart
DiskPart ,noerr
create volume raid :
RAID-5
:
create volume raid [size=n] [disk=n[,n,...]] [noerr]
:
size=n
RAID-5 RAID-5
RAID-5
disk=n
size=n
noerr

```

```
DiskPart
    DiskPart ,noerr
        create volume simple :
            :
        create volume simple [size=n] [disk=n] [noerr]
            :
                size=n
                    disk=n
                        noerr
```

```
DiskPart
    DiskPart ,noerr
        create volume stripe :
            :
        create volume stripe [size=n] [disk=n[, [n,...]]] [noerr]
            :
                size=n
                    disk=n
                        noerr
```

size=n

```
DiskPart
    DiskPart ,noerr
        delete disk :
            :
        delete disk [noerr] [override]
            :
                noerr
```

```
DiskPart
    DiskPart ,noerr
        override
```

```

DiskPart
delete disk override
    .RAID-5
delete partition :
    .( )
    :
delete volume
Table (GPT) GUID Partition
    GPT
    .clean
    :
delete partition [noerr] [override]
    :
    noerr
DiskPart
DiskPart
    ,noerr
    override
DiskPart
DiskPart
delete volume :
    .( )
    :
delete volume [noerr]
    :
    noerr
DiskPart
DiskPart
    ,noerr
detail disk :
    :
detail disk
detail volume :

```

```

:
detail volume
exit :

.DiskPart

:
exit
extend :

(
)

.NTFS
.NTFS

:
extend [size=n] [disk=n] [noerr]
:
size=n

disk=n

size=n

noerr

DiskPart
DiskPart
,noerr
help :

:
help
import :

import
import

:
import [noerr]
:
noerr

```

```

DiskPart
> DiskPart
> list disk :
.
GUID partition table (GPT) boot record (MBR) master
(*)
:
list disk
list partition :
(
)
:
list partition
list volume :
:
list volume
online :
:
online [noerr]
:
noerr
DiskPart
> DiskPart
> ,noerr
rem :
:
rem
:
rem These commands set up 3 drives.
create partition primary size=2048
assign d:
create partition extend
create partition logical size=2048

```



```

                                assign e:
                                create partition logical
                                assign f:
                                remove :

DiskPart ,all
,
,
,
,
                                remove

.EFI      GPT , , , , , GUID  GPT ,OEM
:
remove [{letter=d|mount=Path [all]}] [noerr]
:
letter=d

                                mount=Path

                                all

                                noerr

                                DiskPart
                                DiskPart ,noerr
                                rescan :

:
                                rescan
                                retain :

                                (MBR) master boot record ,x86
                                ,MBR

                                table (GPT) GUID partition ,Itanium

:

.Original Equipment Manufacturers (OEM) retain
:
retain

```

select disk :

:

select disk=[n]

:

n

select

.list disk

select partition :

select

.list partition

:

select partition=[{n|d}]

:

n

d

select volume :

select

.list volume

:

select volume=[{n|d}]

:

n

d

:DiskPart

,DiskPart

,Sysprep

Windows

:

, DiskPart

DiskPart /S scriptname.txt

scriptname.txt

?XP

dialer

<

Upgrade

XP

XP

XP

c:\windows\system32\catroot2 :

XP

:

:

<

<

<

<

msconfig

<

.Known Good Configuration Last

F8

.XP

Repair

XP

:

ASR

<

<

<

<

Remote Desktop

Windows

Professional Windows XP

.CTRL+ALT+DEL

Windows

Microsoft PowerPoint

Windows

(" ") Windows XP Professional

(" ")

.(VPN)

.....

....

...

:()

Windows 2000 Windows NT 4.0 Windows 98 Windows 95
Windows XP Professional

<

XP

<

<

<

(VPN)

(LAN)

.(

IP

)

ASP

"Connection Remote Desktop Web

ActiveX

Internet Explorer

.URL

Internet Explorer Windows

.extranet

.Windows /

World Wide Web

World Wide Web

Windows

.Web Site\tsweb local computer name\Web Sites\Default

tsweb

.....

()

:

[http:// server/tsweb](http://server/tsweb)

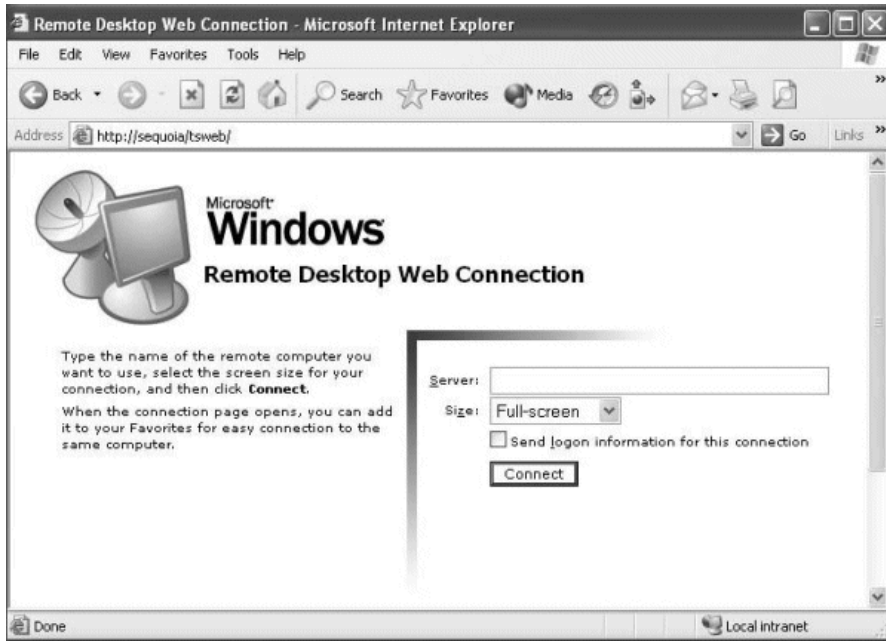
IP

IP server

:

<http://212.125.58.25/tsweb>

:

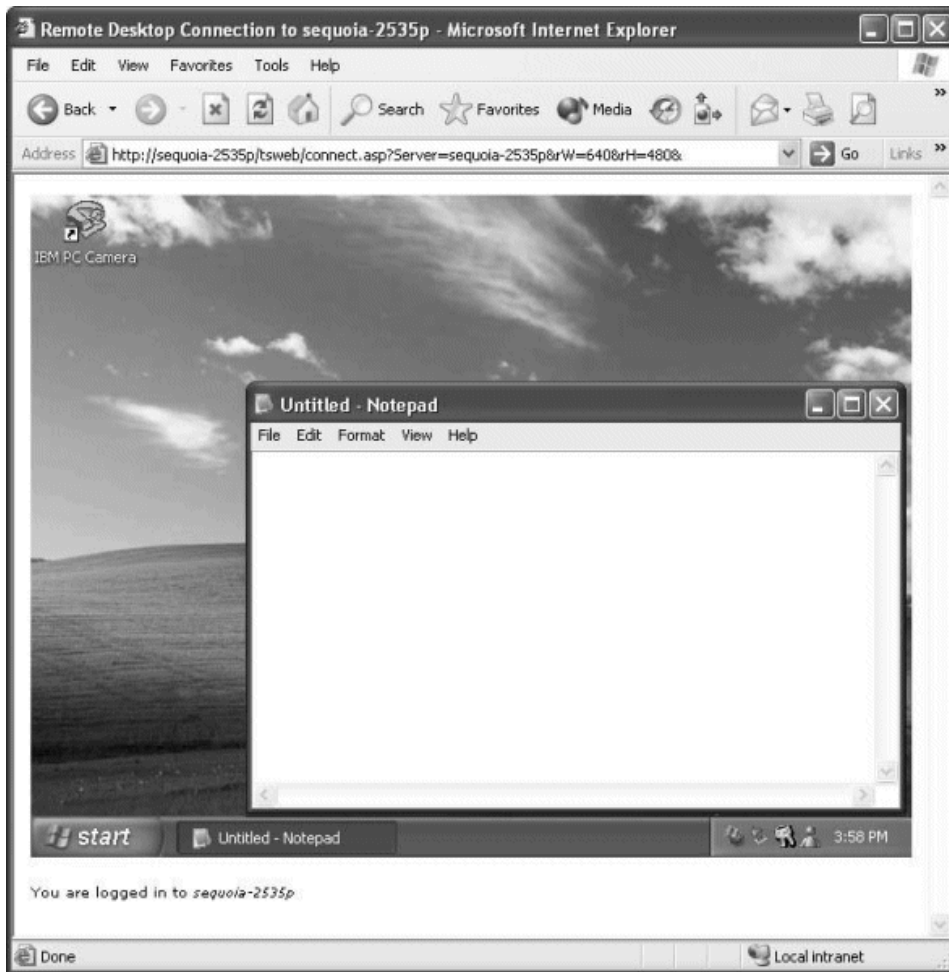


.()

:

Connect

server
Size



: regedit <
HKEY_USERS\DEFAULT\Control Panel\Desktop
AutoEndTasks

<

: regedit <
HKEY_LOCAL_MACHINE\SOFTWARE\Microsoft\Windows\CurrentVersion\Explorer
string) <
AlwaysUnloadDLL (value

XP

sigverif <
Windows\System32\Drivers :

Network Browsing

: regedit <
HKEY_LOCAL_MACHINE/Software/Microsoft/Windows/Current
Version/Explorer/RemoteComputer/NameSpace
:
. {D6277990-4C6A-11CF-8D87-00AA0060F5BF}

XP

ADMINISTRATOR

```

: regedit <
HKEY_LOCAL_MACHINE\SOFTWARE\Microsoft\Windows
NT\CurrentVersion\Winlogon\SpecialAccounts\UserList
Administrator
(DWORD < < : )

```

(L2)

XP

```

: regedit <
HKEY_LOCAL_MACHINE\SYSTEM\CurrentControlSet\Control\Session Manager\Memory
Management
) L2 SecondLevelDataCache
.(

```

EFS

XP

(EFS)

.NTFS

EFS

.FAT

:

.Windows

-
-
-
-
-
-
-
-

.Windows

(Windows Scripting Host (WSH

Windows Scripting

<

Host

XP

IDE ATA/ATAPI

<

IDE

controllers

PIO

?XP

ISDN

DirectParallel

Windows CE

COM

RS-232C

RS-232C

RS-232C

COM

()

:

-

.Administrators

-

-

.palmtop

-

(RS-232C)

-

Administrators

.COM

Administrators

COM

COM

COM

-

:DirectParallel

:

()

()

(LPT1)

:

Windows 2000

DirectParallel

.Windows XP

Shell HKEY_LOCAL_MACHINE\SOFTWARE\Microsoft\Windows\CurrentVersion\Explorer\User Folders

Common Administrative Tools

REG_EXPAND_SZ
%ALLUSERSPROFILE%\Start Menu\Programs\Administrative Tools

?XP

.Windows

.Windows /
Windows

Windows

."Outlook

"Windows

CSID

(CSID)

(CSID)

Windows XP - Image

TIFF

.Preview

Stop :

IRQL_NOT_LESS_OR_EQUAL 0x0000000A

.XP

KMODE_EXCEPTION_NOT_HANDLED Stop 0x0000001E :

XP

NTFS_FILE_SYSTEM Stop 0x00000024 : .

NTFS

chkdsk.exe :

FAT32

DATA_BUS_ERROR Stop 0x0000002E : .

NO_MORE_SYSTEM_PTES Stop 0x0000003F : .

Backup

PAGE_FAULT_IN_NONPAGED_AREA Stop 0x00000050 : .

XP

.MODE SAFE

KERNEL_STACK_INPAGE_ERROR Stop 0x00000077 : .

MISMATCHED_HAL Stop 0x00000079 : .

(hardware abstraction layer (HAL XP

ACPI

ACPI

KERNEL_DATA_INPAGE_ERROR Stop 0x0000007A : .

SCSI

.SCSI

Bad blocks

INACCESSIBLE_BOOT_DEVICE Stop 0x0000007B : .

XP

.Bootcfg

Recovery Console

XP

UNEXPECTED_KERNEL_MODE_TRAP Stop 0x0000007F :

DRIVER_POWER_STATE_FAILURE Stop 0x0000009F :

Safe

.Mode

BAD_POOL_CALLER Stop 0x000000C2 :

DRIVER_IRQL_NOT_LESS_OR_EQUAL Stop 0x000000D1 :

XP

XP

XP

.()

DRIVER_USED_EXCESSIVE_PTES Stop 0x000000D8 :

THREAD_STUCK_IN_DEVICE_DRIVER Stop 0x000000EA :

XP

UNMOUNTABLE_BOOT_VOLUME Stop 0x000000ED :

XP

controller disk

()

XP

HARDWARE_INTERRUPT_STORM Stop 0x000000F2 :

XP

IRQ

IRQ

STATUS_SYSTEM_PROCESS_TERMINATED Stop 0xC000021A :

Crss.exe

STATUS_IMAGE_CHECKSUM_MISMATCH Stop 0xC0000221 :

F8

Recovery Console

Known Good Configuration Last

.XP

F1 Del

(disable)

Power Management

(operating system power management is under the exclusive control of the)

(XP

) Hibernate Stand By

ACPI

()

?

XP

"

"

TCP/IP

XP

TCP/IP

TCP/IP

TCP/IP

.TCP/IP

TCP/IP
(Parameters) Ping Ping
(ICMP) Internet Control Message Protocol

(cmd <) Ping
IP www.example.com Ping www.example.com
: ping www.example.com<\:C
:Pinging VENERA.ISI.EDU [128.9.176.32] with 32 bytes of data
Reply from 128.9.176.32: bytes=32 time=94ms TTL=242
Reply from 128.9.176.32: bytes=32 time=76ms TTL=242
.Request timed out
Reply from 128.9.176.32: bytes=32 time=81ms TTL=242
:Ping statistics for 128.9.176.32
,(Packets: Sent = 4, Received = 3, Lost = 1 (25% loss
:Approximate round trip times in milli-seconds
Minimum = 76ms, Maximum = 94ms, Average = 83ms

TCP/IP

.Request timed out

Ping

ping -n 30 192.168.1.1 : n-
packet loss , , ,

TCP/IP

.Request timed out

: TCP/IP Ping -
ping 127.0.0.1
ping localhost
, , ,

TCP/IP

TCP/IP

IP Ping -

IP Ping -

) gateway router IP Ping -
(server DNS Ping -
Ping -
PathPing -

Ping :
Ping

DNS
IP Ping DNS

.DNS :
:

cmd <) nslookup IP
site.com nslookup site.com :
.(Traceroute
tracert www.example.com Ping www.example.com

ISP

Firewall

(translation (NAT network address

Firewalled
Properties

Advanced

Network By Limiting Or Preventing Access To This Protect My Computer And)
(Computer From The Internet

:IP

```

cmd < IP
subnet mask DNS IP : ipconfig gateway
.all/ ipconfig
: IP
Automatic IP x.y. , : IP -
DHCP client (Private IP Addressing (APIPA
IP DHCP
:
IP Dynamic Host Configuration Protocol (DHCP) server
IP -
: (public) IP
, , , , - , , , , .
, , , , - , , , , .
, , , , - , , , , .
(static) IP , , , : -
IP IP subnet mask -
subnet mask subnet mask
subnet mask : mask subnet IP
IP 255.255.255.0
, , , IP , , ,
subnet mask : 255.255.0.0 IP 192.168.1.101
, , , IP
) gateway , , ,
.(subnet) (
:TCP/IP
: TCP/IP " " -
Support Repair
:
.DHCP IP Ipconfig /renew
.Address Resolution Protocol cache Arp -d

```

```

.NetBIOS name cache      Nostat -R
.DNS cache              Ipconfig /flushdns
                        Ipconfig /registerdns
                        -
                        TCP/IP
                        netsh int ip reset resetlog.txt
                        :DNS
                        DNS
                        :DNS
                        DNS      TCP/IP      -
                        ISP      TCP/IP
                        ping      DNS
                        .TCP/IP  DNS      DNS
                        IP      -
                        DNS
                        IP      IP
:
                        Notepad      Hosts      System32\Drivers\Etc
                        .      IP
                        -
                        ipconfig /flushdns :

```